

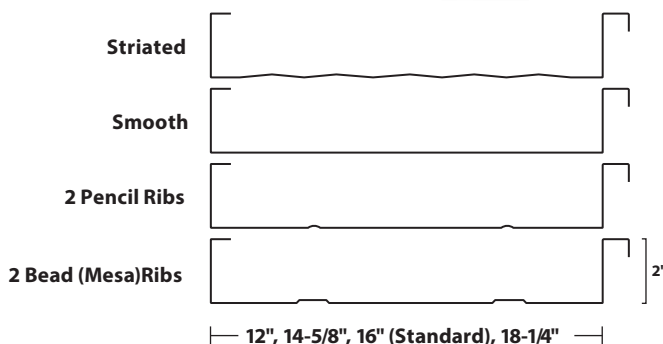
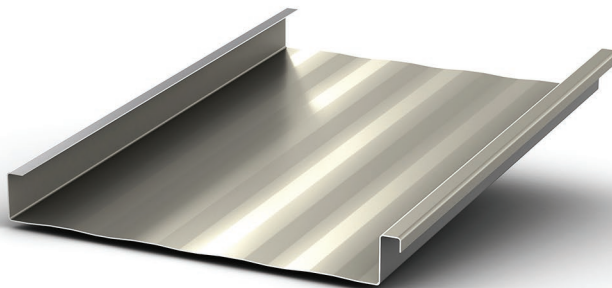
ML200



Your Roof. For Life!
On Time and Complete!™



Contact your sales representative for more information.



Description

Union's ML (Machine-Lock) metal roofing systems include standing seam panels that are mechanically seamed together and can be used for both architectural and structural applications. The ML200 standing seam panel utilizes concealed clips which allow thermal movement of the roof system and provide superior wind uplift resistance. These panels are first partially seamed with the use of a hand seamer, then fully seamed with the use of a mechanical seamer, both of which can be rented for a nominal fee. The ML200 standing seam panels are perfect for low slope applications and are often specified by architects on an array of projects, including: schools, shopping centers, office buildings, hotels, warehouses, and a variety of other applications.

Specifications

- Standing seam concealed fastener panel for roof applications
- Mechanically seamed
- Installs with clips
- 1/2:12 minimum recommended roof pitch
- Suitable for solid deck or open framing
- Applicable for installations requiring weather-tightness warranties

Substrates and Coatings

- 22 gauge and 24 gauge high strength steel.
- 0.032" and 0.040" aluminum.
- Anti-corrosion AZ50 Galvalume coating for painted and AZ55 for unpainted steel.
- PVDF (Kynar 500 or Hylar 5000) Paint System.

Finish Options

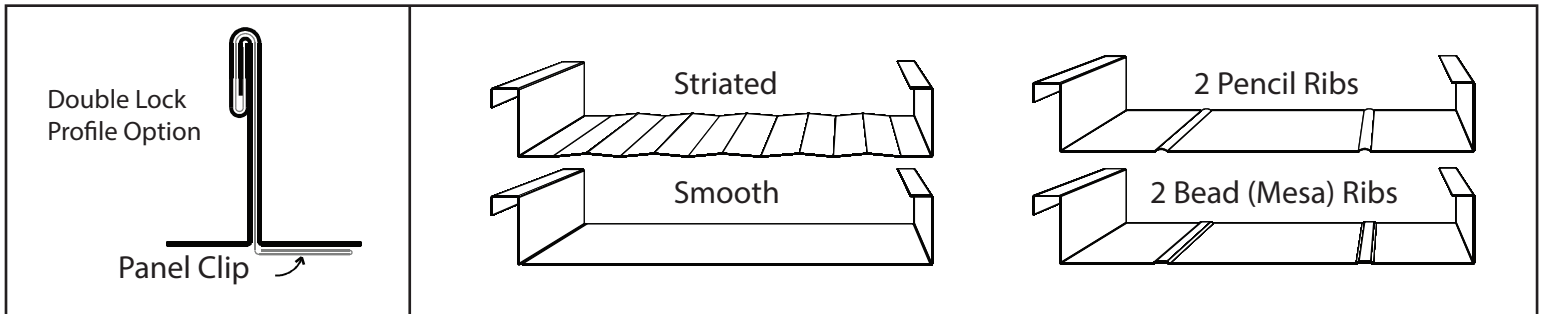
- Bare Galvalume® (with protective clear acrylic coating)
- PVDF Fluoropolymer (Kynar 500®) finish for 24 gauge, 22 gauge, and 0.032" aluminum and 0.040" aluminum

Approvals and Certifications

- Metal Construction Association Certified
- Florida Building Code Approved
- Energy Star Certified
- Highest UL Ratings for Wind Uplift, Fire and Impact Resistance
- No Coastal Set Back



PANEL DETAILS



CERTIFICATIONS & TESTING

- ASTM E-1592 Wind Uplift
- ASTM E-1646 Water Infiltration
- ASTM E-1680 Air Leakage
- ASTM E-2140 Hydrostatic Head Resistance
- UL-90 Wind Uplift 90, 176, 180, 238, 238A
- UL 2218 Impact Resistance Class 4
- UL Class A Fire Resistance

Florida Building Code Approved:

- 7271.8-R5-24 Ga. over 22 Ga. B-decking and 4" Rigid Board Insulation
- 9555.7-R5-Min. 24Ga. over Min. 16 Ga. steel section
- 32186.2-R1-Nom. 0.040 Aluminum over 15/32" APA Rated Plywood (HVHZ)
- 32912.1-24 Ga. over Min 15/32" Plywood (HVHZ)
- 32912.2-R0-24 Ga. over Min. 22 Ga. B-Decking (HVHZ)
- 37328-R0-Nom. 0.032 Aluminum over 15/32" Plywood (HVHZ)

INSTALLATION

Description:

ML200 is a mechanically seamed standing seam roofing panel used on low to steep sloped commercial applications. The double-lock seam profile option provides superior performance in high wind applications. The panel is attached to either open framing or a solid substrate with a variety of hidden clips.

Application:

This product can be applied to open framing (up to 4'-0" on center) and various solid substrate applications such as wood sheathing, wood planking, metal decking, open framing, and rigid insulation applied over metal decking.

*Minimum recommended slope is 1/2:12.

BEFORE BEGINNING INSTALLATION OF THIS PRODUCT, CHECK LOCAL BUILDING CODES.

** For more information, call (888) MTL-ROOF or visit our website at www.unioncorrugating.com **