

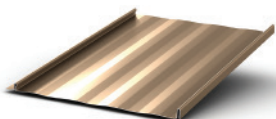
# PRODUCT OVERVIEW

Your Roof. For Life.

Union's products are designed to meet the most demanding performance requirements in the industry. Our prime panels are Metal Construction Association (MCA) certified and use a 25 year warranted Galvalume substrate and the industry leading 45 year siliconized modified polyester (SMP) paint system. Below is a list of some of our certifications and approvals:

- ◆ Metal Construction Association (MCA certified)
- ◆ Highest ULL ratings for wind uplift, fire, and impact resistance
- ◆ Miami-Dade county approved
- ◆ Florida Building Code approved
- ◆ Texas Department of Insurance Approval
- ◆ Energy Star certified

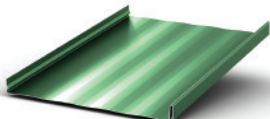
## Advantage-Lok II



The Advantage-Lok II panel is a premium standing seam profile that is designed for distinctive, high-end looks. Very popular in residential and commercial applications, this panel installs without clips and snaps securely together with completely concealed fasteners. Our Advantage-Lok II features 1" ribs.

Gauge Options: 26, 24, Aluminum 0.032"  
Finish Options: Unpainted Galvalume, 45 yr. SMP, Kynar

## SL150



SL150 is a premium standing seam profile that features 1.5" ribs and is very popular in the commercial and high-end residential applications. SL150 is installed with clips that fasten to the roof deck allowing for a "floating" installation. Once secured, the panel ribs snap securely together with completely concealed fasteners.

Gauge Options: 26, 24, Aluminum 0.032"  
Finish Options: Unpainted Galvalume, 45yr. SMP, Kynar

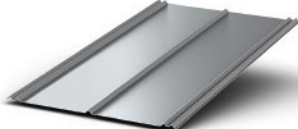
## MasterRib



An industry leader in strength and durability, this popular and versatile panel is used in a wide range of applications including residential, commercial, and post-frame buildings. Designed with extra-wide ribs and a large anti-siphoning channel, MasterRib provides strength and leak resistance under extreme wind and rain loads.

Gauge Options: 29, 26  
Finish Options: Unpainted Galvanized, Unpainted Galvalume, 45 yr. SMP

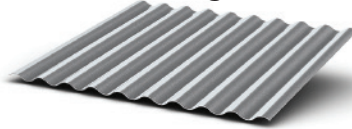
## 5V



For generations, 5V roofing panels have been used on farm buildings and other rural projects. Today, this timeless design is being increasingly used for residential applications. Designed with an enhanced "U" over "V" profile to provide maximum leak resistance.

Economy Gauge Options: 29, 26, 24  
Finish Options: Unpainted Galvanized, Unpainted Galvalume, 45 yr. SMP

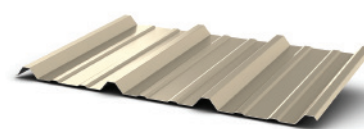
## Corrugated



Corrugated panels are the original metal roofing and siding panels. Today, useage of these panels has expanded beyond their rural heritage, adding a traditional look to many restaurants, retail establishments, and other commercial buildings.

Economy Gauge Options: 29, 26, 24  
Finish Options: Unpainted Galvanized, Unpainted Galvalume, 45 yr. SMP

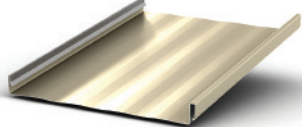
## R, PBR and IR Panel



Designed for industrial, commercial, and steel-frame building applications, the "R" family of panels has the strength to perform on roof pitches as low as 1:12 and on spans up to 5 feet. The R and IR panels are designed for sidewall applications while the PBR panel has an added purlin bearing leg to provide better support.

Gauge Options: 26, 24  
Finish Options: Unpainted Galvalume, 45 yr. SMP, Kynar

## SL-175



SL175 is a snap lock standing seam panel with 1.75" high ribs that can be used for architectural applications. The panel is secured with concealed clips and ribs that lock securely together. SL175 can be specified as an accent feature or a total roof system for schools, shopping centers, banks, hotels, offices, and a variety of other applications.

Gauge Options: 24, 22, Aluminum 0.032", 0.040"  
Finish Options: Unpainted Galvalume, 45yr. SMP, Kynar

## 7/8 Corrugated



Designed for commercial, industrial, residential, and steel-framed building applications, the 7/8" Corrugated Panel provides architects and designers a corrugated profile option which can be installed as both a roof and a wall panel. The 7/8" corrugation height creates the structural integrity required to allow installation over a solid substrate or open framing.

Gauge Options: 26, 24, 22  
Finish Options: Unpainted Galvalume, 45yr. SMP, Kynar

## ValuRib



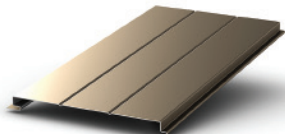
ValuRib is an inexpensive, entry-level version of our popular MasterRib metal roofing panel that's meant for use on applications where durability and strength are not as critical. This panel is popular for carports and various shade and shelter applications.

Gauge Options: 29  
Finish Options: SMP

# PRODUCT OVERVIEW

Your Roof. For Life.

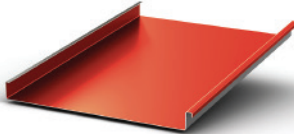
## FL100



FL100 is a versatile panel that can be used on commercial and residential applications. The panel can be installed in a soffit application or vertically as a wall panel. Venting is available when used as a soffit panel. The interlocking mechanism allows for rapid installation and provides a flush appearance with completely concealed fasteners.

Gauge Options: 26, 24, Aluminum 0.032"  
Finish Options: Unpainted Galvalume, 45yr. SMP, Kynar

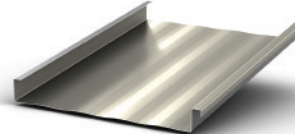
## ML150



ML150 is a mechanically seamed standing seam panel with 1.5" high ribs. It is secured with concealed clips and the ribs are locked together using a rooftop seaming machine. ML150 can be curved to meet radius panel applications. ML150 is typically specified as an accent feature for schools, shopping centers, banks, hotels, offices, and a variety of other applications.

Gauge Options: 24, Aluminum 0.032"  
Finish Options: Unpainted Galvalume, Kynar

## ML200

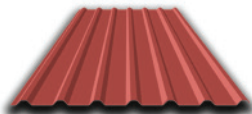


ML200 is a mechanically seamed standing seam panel with 2" high ribs. It is secured with concealed clips and the ribs are locked together using a rooftop seaming machine. This standing seam system provides very high wind uplift resistance and structural integrity. ML200 can be specified as an accent feature or a total roof system for schools, shopping centers, banks, hotels, offices, and a variety of other applications.

Gauge Options: 26, 24, 22, Aluminum 0.032", 0.040"  
Finish Options: Unpainted Galvalume, 45yr. SMP, Kynar, Open Framing, Solid Substrate

Longer lead times may be required for the following panels.

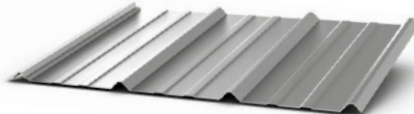
## M Panel



M Panel is a 36" wide exposed fastened panel suitable for both vertical and horizontal applications. This versatile corrugated panel can be installed over open framing or a solid substrate, providing endless design possibilities, including: wall, interior liner, soffit, and roof applications.

Gauge Options: 26, 24  
Finish Options: Unpainted Galvalume, Kynar

## Union Rib



Union Rib is a low profile panel used for agricultural/residential applications only.

Gauge Options: 29, 26  
Finish Options: Painted Grades, Galvalume

## TS-324™ Trapezoidal Panel



The TS-324™ Trapezoidal Panel provides superior wind and weather protection under all roof loading conditions. Typically installed over open framing, the profile maintains its structural integrity with a coverage of 24". Its ¼:12 minimum slope recommendation is the lowest of all metal roofing profiles offered.

Gauge Options: 24, 22  
Finish Options: Unpainted Galvalume, Kynar

## Manufacturing facilities strategically located for **FAST** and **RELIABLE SERVICE**

**Corporate Headquarters**  
701 S. King St.  
Fayetteville, NC 28301  
888-685-7663

**Morrison, TN**  
7747 Manchester Hwy  
Morrison TN 37357  
931-668-4393

**Oklahoma City, OK**  
600 N. Sara Rd. Ste B  
Yukon, OK 73099  
866-373-5286

**Janesville, WI**  
3920 Kennedy Rd.  
Janesville, WI 53545  
877-615-9812

**Scranton, PA**  
100 Keystone0  
Industrial Park Rd. Ste. 2B  
Dunmore, PA 18512  
570-383-2847

**Vicksburg, MS**  
1463 Interplex Circle  
Ceres Industrial Complex  
Vicksburg, MS 39183  
888-661-0577

**Dayton, OH**  
625 N. Third St.  
Tipp City, OH 45371  
877-615-9812

**Tifton, GA**  
3365 US Hwy 41 S.  
Tifton, GA 31794  
800-962-9131

**Orange, VA**  
12435 James Madison  
Orange, VA 22690  
800-762-6785

**Ocala, FL**  
490 Oak Rd.  
Ocala, FL 34472  
800-331-3584